

C. A. McEachern

Joe Manor
Vol. 5467 Pg. 263

F. W. Lemburg, Jr.
Vol. 3336 Pg. 471
(154Ac)

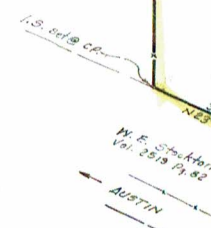
F. W. Lemburg, Jr.
Vol. 3336 Pg. 471
(70.25Ac)

Lester J. Timmerman, Et Al

Olin C. Sansom, Et Al

F. W. Lemburg, Jr.
Vol. 3336 Pg. 471
(40Ac)

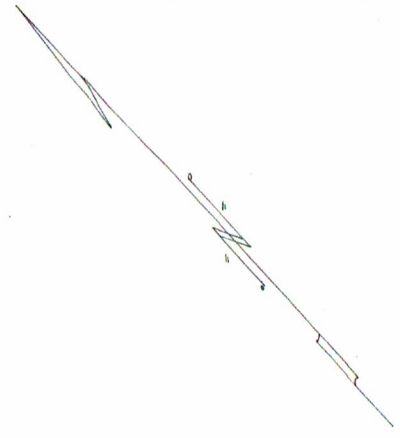
128.26 Ac.
0.36 Ac. in curve
0.23 Ac. in lane
128.85 Ac. Total Surveyed on N. side Hwy.



SURVEYED: July, 1977
BY: Claude F. Bush, Jr.
CLAUDE F. BUSH, JR.
Reg. Public Surveyor #202

FB. 237 P. 120 (127ac)
FB. 238 P. 73

SURVEY PLAT OF 1.27 AC. & 128.85 AC. OF LAND OUT OF THE JOHN F. WEBBER SUR. NO. 11 IN TRAVIS COUNTY, TEXAS, BEING ALL THAT CERTAIN LAND CONVEYED TO F. W. LEMBURG JR. IN THREE (3) TRACTS IN DEED RECORDED IN VOLUME 3336 PG. 471, TRAVIS COUNTY DEED REC. SCALE: 1" = 200'



T.M. 1-10